

# Fieldpiece®

INSTRUMENTS

## Fieldpiece Overview

Fieldpiece Instruments was incorporated June 1990 in the United States to develop tools specifically for HVACR professionals.

Fieldpiece focuses on making the job easier, faster and better for HVACR professionals. Our network of tools is designed to measure just about anything a technician would need to diagnose and repair HVACR systems.

Today, Fieldpiece is the HVACR industry's leading innovator of instruments in these product categories:

- Recovery
- A/C Analysis
- Multimeters
- Charging
- Leak Detection
- Temp & %RH
- Air Flow
- Combustion
- Pocket Tools
- Tool Bags

HVACR professionals trust Fieldpiece to have the right tools to help them do more. Every day.

Distributed by:

Fieldpiece Instruments, Inc.  
1636 W Collins Ave Orange, CA 92867  
Phone: 714.634.1844 Fax: 714.551.2299  
[www.fieldpiece.com](http://www.fieldpiece.com)



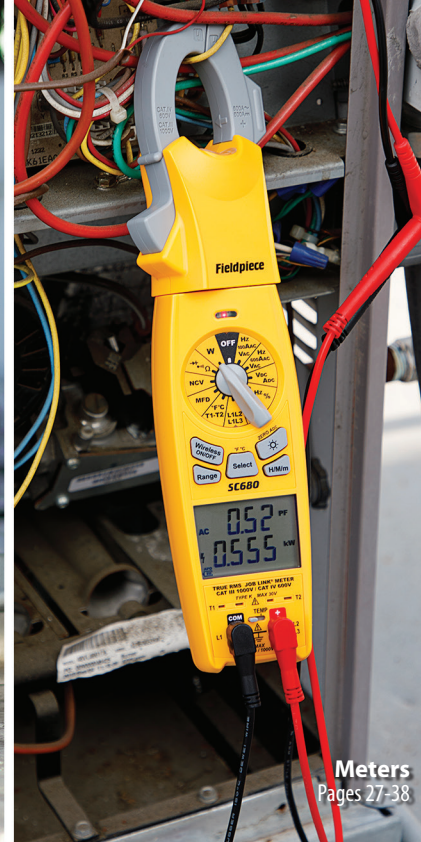
3/1/2020



**A/C Analysis**  
Pages 9-16



**Charging**  
Pages 17-26



**Meters**  
Pages 27-38

# Table of Contents

<b>New Products</b>	<b>1 - 8</b>
<b>A/C Analysis</b>	<b>9 - 16</b>
<b>Charging</b>	<b>17 - 26</b>
<b>Meters and Accessories</b>	<b>27 - 38</b>
<b>Temperature / %RH</b>	<b>39 - 46</b>
<b>Refrigerant Leak Detection</b>	<b>47 - 50</b>
<b>Airflow</b>	<b>51 - 56</b>
<b>Combustion</b>	<b>57 - 64</b>
<b>Pocket Tools</b>	<b>65 - 70</b>
<b>Bags</b>	<b>71 - 74</b>
<b>Index</b>	<b>75 - 76</b>



**Job Link**  
Pages 15-16



**Air Flow**  
Pages 51-56



**Bags**  
Page 71-74

# New Products





SM480V

## SMAN™ Refrigerant Manifolds with Micron Gauge

SM480V, SM380V

Knowledge, power and experience are packed into the newly designed SMAN™ Refrigerant Manifolds. Years of feedback from A/C and refrigeration specialists is combined with Fieldpiece's laser focus on continuous improvement to bring you the toughest, most advanced digital refrigerant manifold on the market.



### Simply Strong

- Beefy hook
- Water resistant (IP54)
- Impact resistant case
- 3 Protected thermocouple jacks
- Built-in micron gauge
- 3/8" VAC port (SM480V only)

### Included

- SM380V or SM480V SMAN Refrigerant Manifold
- (2) TC24 Type K pipe clamp thermocouples
- (1) ATA1 Type K bead thermocouple w/Clip
- (1) ANC11 Padded drawstring case



SM480V



SM380V

### Packed with Knowledge

The SM380V and SM480V are designed to work the way you do with advanced features to streamline your job and provide your customers with the answers they need.

### Data Logging

- Stores up to 9 jobs internally
- Easy download via USB port
- Displays % free storage space before logging begins
- Logs up to 7 days (168 continuous hours)

### Tightness Test

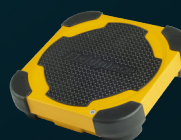
- Check for leaks after repairs or installations
- View pressure differential over time
- Timer tracks duration of test
- Temperature compensated with SL temp to avoid false positives

### Customizable

- Adjust auto power off duration
- Adjust back light duration
- Set high and low vacuum alarms
- Automatically favorite your last 10 refrigerants

### Wireless Integration with Job Link® System Tools

- Live pipe and air temps with Job Link probes
- Monitor refrigerant weight directly on manifolds using SRS3 scale
- View measurements on SMAN and/or in Job Link App
- Direct 350' wireless range (no transmitter needed)



SRS3 Wireless Scale



JL3RH



JL3PC



## Vacuum Pumps

### VP85 / VP55

#### Vacuum Pumps with RunQuick™ Oil Change System

Fieldpiece is leading the charge in properly performing system evacuation with its new vacuum pumps with RunQuick™ Oil Change System. Available in an 8 CFM DC motor (model VP85), or in a 5 CFM AC motor (model VP55), these revolutionary pumps make evacuation easier and faster.

Good oil is a key ingredient of every evacuation. Clearly view your pump oil through the huge oil reservoir window to see the condition of the oil, and the system. When it's time to change the oil, it's quick, clean, and easy. With the RunQuick oil change system you can replace the oil in under 20 seconds, even while the pump is running without losing vacuum.

Plus the extra wide base helps prevent tipping and spilling oil. Four in-line ports give you tidy hose routing for three different size hoses. Place the cord on the handle for tangle-free storage.

#### Leading the Charge

- On-the-fly oil change in seconds
- In-line four port manifold for easy access
- Backlit oil reservoir to view condition of oil and system
- Anti oil-suck-back keeps oil out of gauges and system
- Simple-to-use gas ballast with LED indicator
- Water resistant to withstand direct rain
- 15 micron ultimate vacuum
- Sturdy base to stay upright



### Specifications

- **Flow Rate:** 8CFM (VP85), 5CFM (VP55)
- **Oil Capacity:** 8oz (237mL)
- **Oil Compatibility:** Fieldpiece Vacuum Pump Oil (Highly refined and optimized for proper sealing and lubrication)
- **Oil Backlight:** Blue LED
- **Oil Drain:** Ball valve
- **Port Sizes:** (1) 1/4", (2) 3/8", (1) 1/2"
- **Compressor:** Rotary vane, two stage
- **Motor:** 3/4 HP Brushless DC (VP85), 1/3 HP AC (VP55)
- **RPM:** 2500 (VP85), 3440 (VP55)
- **Power Source:** 95 to 130 VAC @ 60 Hz (VP85)  
108 to 130 VAC @ 60 Hz (VP55)
- **Nominal Current Draw:** 9.0 AAC (VP85), 8.0 AAC (VP55)
- **Ultimate Vacuum at Input Ports:** 15 microns
- **Dimensions:** 9.25" x 12.4" x 17.7" (235 mm x 315 mm x 450 mm)
- **Weight:** 28 lbs without oil (VP85), 30 lbs without oil (VP55)
- **Operating Environment:** 30°F to 122°F (-1.1°C to 50°C)
- **Patent:** Patents Pending

## Fieldpiece Vacuum Pump Oil

### OIL128, OIL32, OIL8X3

#### Optimized for top performance

Gallon P/N#OIL128, 1 Quart P/N# OIL32, 8oz 3pack P/N# OIL8X3



- Low vapor pressure
- Wide temperature range
- Wide mouth bottles



## Digital Recovery Machine

MR45

### Smart, 1HP Variable Speed DC Motor

The variable smart speed DC motor is quieter, faster, smoother, and lighter for increased performance and comfort. Liquid slugging is minimized and vapor recovery is maximized. The advanced motor control also adjusts to match incoming voltage so that your machine works with longer extension cords or when the power grid is over capacity on hot days. Do more with MR45.

### Lightweight (22 lbs)

- DC motor is small and light
- Carry it comfortably

### Smoother and Faster

- Smooth liquid recovery
- Variable smart speed motor maximizes performance
- Rubber feet and motor mounts reduce noise and vibrations
- 1 horsepower motor supplies speed and power
- Cools faster, especially on hot days

### Reliable

- Active electronic monitoring protection system
- Rubberized housing protects components
- Ceramic cylinders resist abrasion
- Rail slides protect the machine and building
- Long lasting piston seals
- Protected electronics for rainy days
- Operating voltage between 95 and 130VAC

### Easy Access Ports

- Ports face out for easy access and direct flow
- Ports elevated from ground
- Rubber bumpers protect ports
- Mesh screen fitting stays in place when removing hoses
- Large rubberized dual-port routing knob

### Digital Display

- Easily read the large digits
- Status messages clarify operation
- Blue backlight helps in darker situations
- Withstands long days in the sun and rain

### And More

- Power cord stores on the handle
- Room to hook the handle for hoisting to the roof
- Self purge protects MR45 and our environment







SM480V

## SMAN™ Refrigerant Manifolds with Micron Gauge

SM480V, SM380V

Knowledge, power and experience are packed into the newly designed SMAN™ Refrigerant Manifolds. Years of feedback from A/C and refrigeration specialists is combined with Fieldpiece's laser focus on continuous improvement to bring you the toughest, most advanced digital refrigerant manifold on the market.



### Simply Strong

- Beefy hook
- Water resistant (IP54)
- Impact resistant case
- 3 Protected thermocouple jacks
- Built-in micron gauge
- 3/8" VAC port (SM480V only)

### Included

- SM380V or SM480V SMAN Refrigerant Manifold
- (2) TC24 Type K pipe clamp thermocouples
- (1) ATA1 Type K bead thermocouple w/clip
- (1) ANC11 Padded drawstring case



SM480V



SM380V

### Packed with Knowledge

The SM380V and SM480V are designed to work the way you do with advanced features to streamline your job and provide your customers with the answers they need.

### Data Logging

- Stores up to 9 jobs internally
- Easy download via USB port
- Displays % free storage space before logging begins
- Logs up to 7 days (168 continuous hours)

### Tightness Test

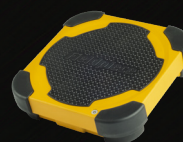
- Check for leaks after repairs or installations
- View pressure differential over time
- Timer tracks duration of test
- Temperature compensated with SL temp to avoid false positives

### Customizable

- Adjust auto power off duration
- Adjust back light duration
- Set high and low vacuum alarms
- Automatically favorite your last 10 refrigerants

### Wireless Integration with Job Link® System Tools

- Live pipe and air temps with Job Link probes
- Monitor refrigerant weight directly on manifolds using SRS3 scale
- View measurements on SMAN and/or in Job Link App
- Direct 350' wireless range (no transmitter needed)



SRS3 Wireless Scale

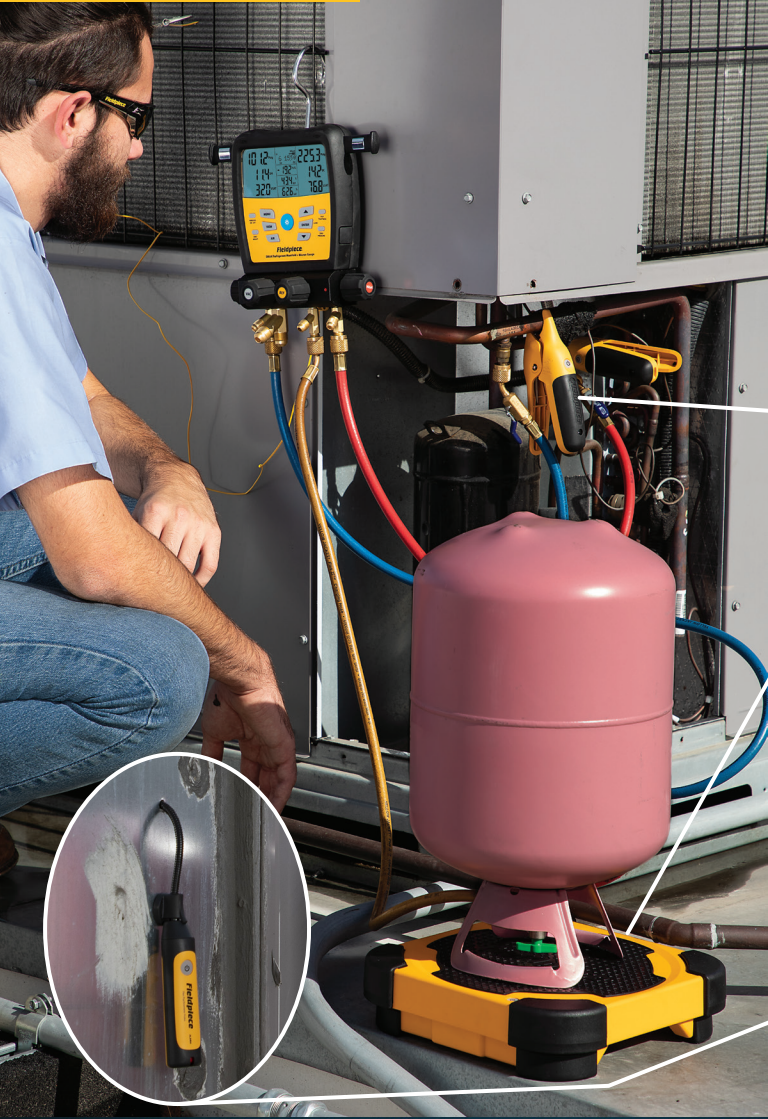


JL3RH

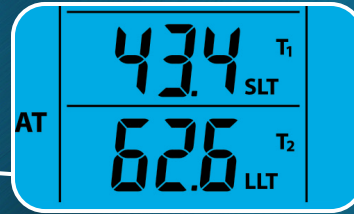


JL3PC



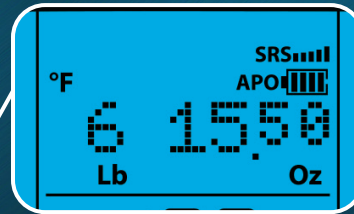


# 350' Wireless Readings Direct to SM380V and SM480V



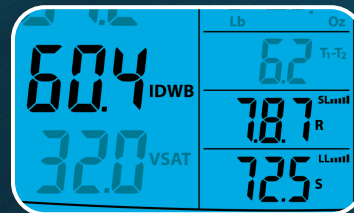
### Pipe Temperatures

Place pipe clamps in the perfect location and view instantaneous readings on your screen.



### Refrigerant Usage

Monitor and record live refrigerant usage for precise recovery, charging and documentation.



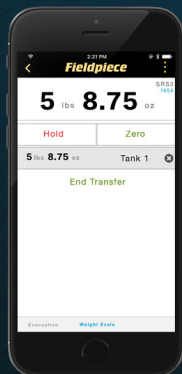
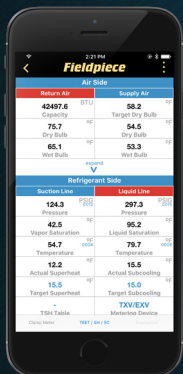
### Indoor Air Temps

View live air measurements on your SMAN while making adjustments.

## Go Next Level with the Job Link System App

Streamline and simplify your call even further with the Job Link System App. See your measurements up to 350' away on your mobile device. Document your work and provide professional reports, including refrigerant weight usage, by simply connecting to the Job Link System app. Shown to increase profits and reduce call-backs.

- View measurements on SMAN and/or in Job Link App
- Monitor and record refrigerant weight directly on SMAN using SRS3 scale
- Direct 350' wireless range (no transmitter needed)





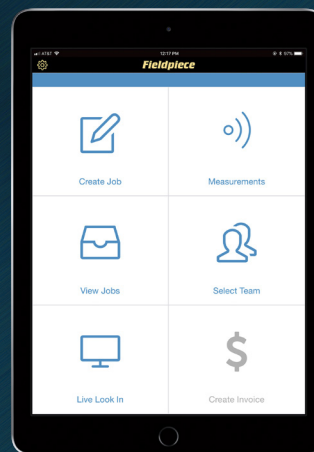
JL3KH6

## Job Link® System Probes

Easy, long range, powerful

Take a full system snapshot quickly and easily with Job Link Probes. Each tool is designed for agility and speed. The pressure probe fits into tight spaces. The pipe clamp uses a new rapid rail thermocouple design delivering accuracy, speed, and agility, even on the most awkward pipe configurations. The psychrometer's flexible narrow probe and configurable magnet make it easy to measure supply plenums, ducts, or elevated registers. All probes are expandable for multi-circuit systems. Do more with Job Link!

- 350' Range
- iOS® and Android™
- Water resistant
- Email reports
- Instant and accurate pipe temps
- High/Low side switch and indicator
- Connect directly to mobile device
- Quick-access protective case



Tablet not included



Phone not included

## Job Link® System Mobile App

Access a variety of Fieldpiece tools through the most advanced wireless system on the market today. Visit [fieldpiecejoblink.com](http://fieldpiecejoblink.com) to sign up today!

## Job Link

Quickly and easily diagnose the system correctly the first time to prevent call backs.

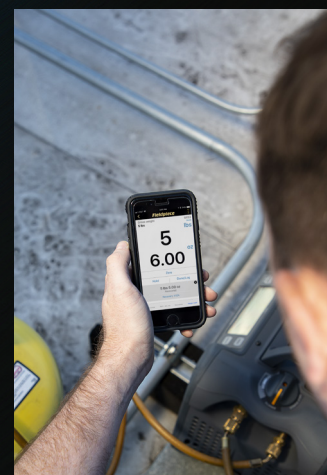
- Live measurements
- Advanced calculations
- System diagnostics
- Free PDF reports

## Job Link Pro

\$12/mo

Everything in Job Link plus:

- Cloud storage
- Inspection checklists
- Photos and notes
- Customer and equipment history
- Build teams
- Live Look-in



## Job Link Pro + Invoicing

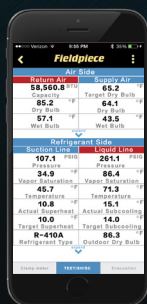
\$29/mo

Everything in Job Link and Job Link Pro plus:

- Professional invoicing
- Customizable parts and equipment
- Customizable hourly rates
- QuickBooks online integration



JL3KR4



Phone not included

**Charging**





## Vacuum Pumps

VP85 / VP55

### Vacuum Pumps with RunQuick™ Oil Change System

Fieldpiece is leading the charge in properly performing system evacuation with its new vacuum pumps with RunQuick™ Oil Change System. Available in an 8 CFM DC motor (model VP85), or in a 5 CFM AC motor (model VP55), these revolutionary pumps make evacuation easier and faster.

Good oil is a key ingredient of every evacuation. Clearly view your pump oil through the huge oil reservoir window to see the condition of the oil, and the system. When it's time to change the oil, it's quick, clean, and easy. With the RunQuick oil change system you can replace the oil in under 20 seconds, even while the pump is running without losing vacuum.

Plus the extra wide base helps prevent tipping and spilling oil. Four in-line ports give you tidy hose routing for three different size hoses. Place the cord on the handle for tangle-free storage.

### Leading the Charge

- On-the-fly oil change in seconds
- In-line four port manifold for easy access
- Backlit oil reservoir to view condition of oil and system
- Anti oil-suck-back keeps oil out of gauges and system
- Simple-to-use gas ballast with LED indicator
- Water resistant to withstand direct rain
- 15 micron ultimate vacuum
- Sturdy base to stay upright

### Specifications

- **Flow Rate:** 8CFM (VP85), 5CFM (VP55)
- **Oil Capacity:** 8oz (237mL)
- **Oil Compatibility:** Fieldpiece Vacuum Pump Oil (Highly refined and optimized for proper sealing and lubrication)
- **Oil Backlight:** Blue LED
- **Oil Drain:** Ball valve
- **Port Sizes:** (1) 1/4", (2) 3/8", (1) 1/2"
- **Compressor:** Rotary vane, two stage
- **Motor:** 3/4 HP Brushless DC (VP85), 1/3 HP AC (VP55)
- **RPM:** 2500 (VP85), 3440 (VP55)
- **Power Source:** 95 to 130 VAC @ 60 Hz (VP85)  
108 to 130 VAC @ 60 Hz (VP55)
- **Nominal Current Draw:** 9.0 AAC (VP85), 8.0 AAC (VP55)
- **Ultimate Vacuum at Input Ports:** 15 microns
- **Dimensions:** 9.25" x 12.4" x 17.7" (235 mm x 315 mm x 450 mm)
- **Weight:** 28 lbs without oil (VP85), 30 lbs without oil (VP55)
- **Operating Environment:** 30°F to 122°F (-1.1°C to 50°C)
- **Patent:** Patents Pending

## Fieldpiece Vacuum Pump Oil

OIL128, OIL32, OIL8X3

### Optimized for top performance

Gallon P/N#OIL128, 1 Quart P/N# OIL32, 8oz 3pack P/N# OIL8X3



- Low vapor pressure
- Wide temperature range
- Wide mouth bottles



## Digital Recovery Machine

MR45

### Smart, 1HP Variable Speed DC Motor

The variable smart speed DC motor is quieter, faster, smoother, and lighter for increased performance and comfort. Liquid slugging is minimized and vapor recovery is maximized. The advanced motor control also adjusts to match incoming voltage so that your machine works with longer extension cords or when the power grid is over capacity on hot days. Do more with MR45.

### Lightweight (22 lbs)

- DC motor is small and light
- Carry it comfortably

### Smoother and Faster

- Smooth liquid recovery
- Variable smart speed motor maximizes performance
- Rubber feet and motor mounts reduce noise and vibrations
- 1 horsepower motor supplies speed and power
- Micro channel condenser cools faster, especially on hot days

### Reliable

- Active electronic monitoring protection system
- Rubberized housing protects components
- Ceramic cylinders resist abrasion
- Rail slides protect the machine and building
- Long lasting piston seals
- Protected electronics for rainy days
- Operating voltage between 95 and 130VAC

### IN/OUT Port Upgrades

- Ports face out for easy access and direct flow
- Ports elevated from ground
- Rubber bumpers protect ports
- Mesh screen fitting stays in place when removing hoses
- Large rubberized dual-port routing knob

### Digital Display

- Easily read the large digits
- Status messages clarify operation
- Blue backlight helps in darker situations
- Withstands long days in the sun and rain

### And More

- Power cord stores on the handle
- Room to hook the handle for hoisting to the roof
- Self purge protects MR45 and our environment



## Residential & Light Commercial Refrigerant Scale

### SRS1

#### Lightweight Refrigerant Scale

The SRS1 refrigerant scale is big enough to comfortably fit a canister, but compact and light weight enough to carry easily. It has the ruggedness needed for HVACR, with thick aluminum walls to maintain accuracy, and rubber feet and rubber pad to soften the impact of daily use.

- Charge/Recover weight alarms
- Light weight and easy to carry
- Max weight 110 lbs (50 kgs)
- 025 oz (001 kg) resolution
- Non-slip cushioned design
- Full numeric keypad for fast operation
- Strong magnetic back on handle



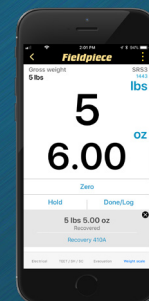
## Wireless Refrigerant Scale

### SRS3

#### Heavy Duty with Premium Performance

Not only is the wireless scale easy to use, it's so accurate it can sense weight as low as 0.25 oz. The remote display has a backlight and a strong magnetic hanger. The platform is made of solid aluminum with rubber corners to protect against the hazards of daily use.

- View and record refrigerant usage directly on new SMANs (models SM380V and SM480V)
- Connect to the Job Link® System mobile app
- Solid aluminum construction
- Rubber grip pad to hold refrigerant tanks
- Hands-free testing with magnetic hat
- Flat top bumpers for large tanks
- Water resistant IP55
- Measure up to 252 lb (114 kg)
- 200 hour platform battery life



Remote stores safely in platform



#### Included:

- Refrigerant platform
- Wireless remote display
- Nylon case with strap – ANC9

## Digital Micron Vacuum Gauge

### SVG3

Easy to use and built tough to handle day-to-day use in the field.

- Rate indicator
- Schrader depressor
- 1 Micron resolution
- 0 – 9999 Micron range
- Alarms and stopwatch

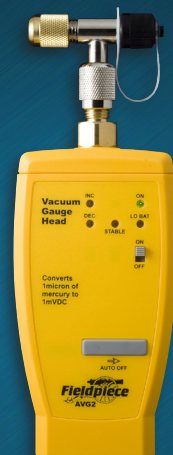


## Digital Vacuum Micron Gauge

### AVG2 - Accessory Head

Displays vacuum pressure with resolution of 1 micron.

- Range: 50 to 2000 microns
- Resolution: 1 micron
- Accuracy (@~75°F): ±10%, 0-1000 microns
- Fitting: 1/4" flared brass fitting (male)
- "T" included for vacuum testing
- LEDs indicate increasing, decreasing, and stable vacuum



## Superheat and Subcooling

### SSX34

Measures suction or liquid line pressure and temperature. Automatically calculates and displays real-time superheat or subcooling.

- Charge to superheat and subcooling
- Push button atmospheric pressure calibration
- R-134A, R-404A, R-410A, R-22
- Hands free operation with magnetic hanger
- Displays in °F and °C

### Included:

- Thermocouple pipe clamp - TC24



## Superheat and Subcooling

### ASX14 - Accessory Head

Measures suction line or liquid line pressure and line temperature to calculate and display superheat and subcooling for A/C.

- R-22 or R-410A
- Displays in °F or °C
- Displays pressure in PSI or kPa
- LED indicates stable reading
- Push-button atmospheric pressure calibration

### Included:

- Thermocouple pipe clamp - TC24



## Charging Jacket for TXV Systems

### S365

Charge A/C systems year round.

- Charge TXV systems when outdoor temperature is 37°F to 70°F
- Pressures stabilize quickly during setup
- Service maintenance contracts before and after the summer heat



# *Meters*





**Loaded Clamp Meters**

SC620, SC640, SC680

**Top-of-the-Line Meters Have it All**

Packed with more features and measurements than any clamp meter in the HVACR industry, the loaded SC600 series features lead storage, a swivel head, test lead holder for safer testing, and a heavy duty magnetic strap.

- Top-of-the-line meter
- Swivel-head clamp
- Magnetic strap
- Lead storage
- Dual display
- Clamp test-lead holder
- Frequency via leads & clamps
- Dial backlight (SC640 & 680)
- Jaw flashlight (SC640 & 680)
- LCD backlight (SC640 & 680)
- Phase rotation (SC680)
- Dual temperature delta T (SC680)
- Amps AC/DC (SC680)
- Power Factor (SC680)
- Low Pass Filter (SC680)
- Job Link compatible (SC680)

**Included**

- Wrap tab type K thermocouple - ATB1
- Deluxe silicone lead set with gold plated tips and removable sheath - ADLS2
- Molex Test Leads (SC680)
- Short alligator lead extensions - ASA2
- Padded case - ANC7
- 9V battery
- Velcro strap



SC680

**NEW****NEW**

SC620	SC640	SC680	Function
●	●	●	Volts AC/DC
●	●	●	Amps AC/DC
●	●	●	600VAC/DC
		●	750VAC, 1000VDC
		●	Power Factor
		●	Low Pass Filter
		●	Job Link® System
		●	Dual Temp Delta T
		●	Phase Rotation
	●	●	True RMS
	●	●	Inrush
●	●	●	Swivel Clamp
●	●	●	Magnetic Strap
●	●	●	Probe Storage
●	●	●	Dual Display
●	●	●	Temperature °F/°C
●	●	●	Capacitance
●	●	●	Duty Cycle %
●	●	●	400 AAC
●	●	●	600 AAC/ADC
●	●	●	Microamps DC
●	●	●	Frequency via Leads/Clamp
●	●	●	Non Contact Voltage
●	●	●	50 Mega Ohm with 0.1 Resolution
●	●	●	Continuity
●	●	●	Diode Test
●	●	●	Hold
●	●	●	Clamp Probe Holder
	●	●	Dial Backlight
	●	●	Clamp Jaw Light
	●	●	LCD Backlight
●	●	●	Low Battery Indicator
●	●	●	Battery: 9V, 100 hrs
●	●	●	Battery: 9V, 200 hrs
●	●	●	Compliance with UL 3rd Edition
●	●	●	CATIII 600VAC/DC
		●	UL rated up to CATIII 1000VAC/DC and CATIV 600VAC/DC

# Essential Clamp Meters

SC420, SC440, SC480

## Feature Rich for HVACR Pros

The mid-sized SC400 meters are essential for all types of electrical HVACR testing. The dual display makes it easy to view both voltage and amperage readings at the same time. The non-contact voltage indicator and the probe holder make electrical testing safer.

- Packed meter, affordable price
- Dual display
- Clamp test-lead holder
- True RMS (SC440 & 480)
- Inrush (SC440 & 480)
- Magnetic strap (SC440 & 480)
- Phase rotation (SC480)
- Power Factor (SC480)
- Low Pass Filter (SC480)
- Job Link compatible (SC480)



SC480



### Included

- Wrap tab type K thermocouple - ATB1
- Molex Test Leads (SC480)
- Deluxe silicone lead set with gold plated tips and removable sheath - ADLS2
- Short alligator
- Lead extensions - (SC440)
- Padded case - ANC12
- 9V battery
- Velcro strap



SC420

SC440

SC480



SC420	SC440	SC480	Function
●	●	●	Volts AC/DC
		●	Power Factor
		●	Low Pass Filter
		●	Job Link® System
		●	Phase Rotation
	●	●	True RMS
	●	●	Inrush
●	●		Duty Cycle %
●	●		600VAC/DC
		●	750VAC,1000VDC
●	●	●	400 AAC
	●	●	Magnetic Strap
●	●	●	Dual Display
●	●	●	Temperature °F/°C
●	●	●	Capacitance
●	●	●	Microamps DC
●	●	●	Frequency via Leads/Clamp
●	●	●	Non Contact Voltage
●	●	●	50 Mega Ohm with 0.1 Resolution
●	●	●	Continuity
●	●	●	Diode Test
●	●	●	Hold
●	●	●	Clamp Probe Holder
	●	●	Clamp Jaw Light
	●	●	LCD Backlight
●	●	●	Low Battery Indicator
●	●	●	Battery: 9V, 100 hrs
●	●	●	Battery: 9V, 200 hrs
●	●	●	Compliance with UL 3rd Edition
●	●	●	CATIII 600VAC/DC
		●	UL rated up to CATIII 1000VAC/DC and CATIV 600VAC/DC

## Compact Clamp Meters

SC220, SC240, SC260

### Ultimate in Convenience and Affordability

The SC200 Compact Clamp Meters combine a lot of big meter functions into a compact, easy-to-use design, and are great for testing HVACR electrical measurements.

The SC200s help you save time with the new Auto Select mode. Simply set the dial and connect your leads, the clamp meter will automatically select the appropriate measurement depending on what it detects.

The high temperature resistance allows you to move from a cold freezer to a hot rooftop and get accurate temperature measurements that lesser thermometers cannot measure properly.

- Volts AC/DC
- 400 Amps AC
- Microamps DC (SC220)
- Temperature F°/C° (SC240/SC260)
- Capacitance (SC240/SC260)
- Non-contact voltage
- 40 Mega Ohm with 0.01 resolution
- Continuity
- Diode test
- Max/Min/Hold
- LCD backlight (SC260)
- True RMS (SC260)
- Low battery indicator
- Sturdy magnet (SC260)



SC260



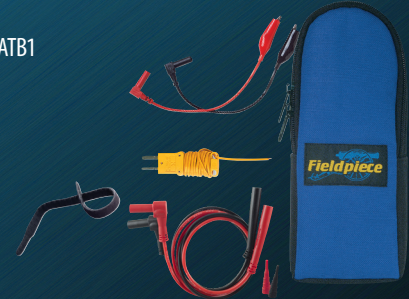
SC220

SC240

SC260

### Included

- Wrap tab type K thermocouple - ATB1 (SC240, SC260)
- Deluxe silicone lead set with gold plated tips and removable sheath - ADLS2
- Padded case - ANC4
- 9V battery
- Velcro strap (SC240, SC260)



SC220	SC240	SC260	Function
●	●	●	Volts AC/DC
		●	True RMS
●		●	400 Amps AC
		●	Magnetic Hanger
	●	●	Temperature °F/°C
	●	●	Capacitance
●			Microamps DC
●	●	●	Non Contact Voltage
●	●	●	40 Mega Ohm with 0.1 Resolution
●	●	●	Continuity
●	●	●	Diode Test
●	●	●	Max/Min
●	●	●	Hold
		●	LCD Backlight
●	●	●	Low Battery Indicator
		●	Battery: 9V, 150 hrs
●	●		Battery: 9V, 200 hrs
●	●	●	Compliance with UL 3rd Edition

# Expandable Stick Meters



HS36

## HS33, HS35, HS36 The Perfect Fit for Most HVACR Jobs

The HS30 Series meters are some of the most versatile HVACR meters around. Already packed with the measurements HVACR pros need, they also connect directly into Fieldpiece Accessory Heads, so techs don't need extra meters for additional measurements.

- Ruggedized rubber corners
- Magnetic strap for hands-free testing
- High voltage indicators
- Lead storage
- Non-contact voltage
- Capacitance
- MIN/MAX and Hold buttons to record measurements
- Low ohms for motor windings
- Fast, accurate temps



HS33

HS35

## Included

- 400A AC amp clamp accessory – ACH4
- Type K thermocouple – ATB1
- Deluxe silicone test leads – ADLS2
- Alligator clip lead extensions – ASA2
- 4-Pocket meter case – ANC1
- Velcro strap



HS33	HS35	HS36	Function	Range	Resolution
Manual	Auto	Auto	<b>Ranging</b>		
2000	4000	4000	<b>Counts</b>		
Average	Average	True RMS	<b>AC Conversion</b>		
		●	<b>Backlight</b>		
		●	<b>Bar Graph</b>		
	●	●	<b>VAC</b>	200m	1.2% + 5/0.1m
	●	●		2000m	1.5% + 5/1m
	●	●		40	1.5% + 5/0.01
●	●	●		200	1.5% + 5/0.1m
●	●	●		600	2% + 5/1
●	●	●	<b>VDC</b>	200m	0.5% + 2/0.1 m
●	●	●		2000m	0.5% + 2/1m
	●	●		20	0.5% + 2/0.01
●	●	●		200	0.5% + 2/0.1
	●	●		600	0.5% + 2/1
●	●	●	<b>AAC</b>	20	2.7% + 7/0.1
●	●	●		100	3.7% + 8/0.1
●	●	●		400	5.0% + 10/1
	●	●	<b>ADC</b>	400μ	1% + 2/0.1 μ
	●	●		4000μ	1% + 2/1 μ
●	●	●	<b>°F</b>	200° F	1° F/0.1
	●	●		1000° F	1° F/1
●	●	●	<b>MFD</b>	200	3% + 5/0.1m
●	●	●	<b>Hi-V Indicator</b>		>30V
●	●	●	<b>NCV</b>		>24VAC
●	●	●	<b>Ohms</b>	200	1% + 4/0/1
	●	●		4K	1% + 4/1
	●	●		40K	1% + 4/10
●	●	●		200K	1% + 4/100
	●	●		4M	1.5% + 4/1K
	●	●		20M	3% + 5/10K
●	●	●	<b>Continuity</b>		
●	●	●	<b>Diode</b>		
	●	●	<b>HZ</b>		

● With ACH4 clamp head, ● LED and beeper, ● Range is 40XX, not 20XX  
Temperature accuracies shown are after simple field calibration



## Digital Multimeters

### LT17A

#### The Biggest Bang for Your Buck

The LT series cover most parameters and ranges technicians need for HVACR applications. And to further expand testing capabilities, the leads connect directly to any Fieldpiece accessory head.



- Continuity indicator
- Type K thermocouple
- Bright, blue backlight
- Low ohm ranges
- Both mA and  $\mu$ A for testing flame rectifier diodes
- MIN/MAX function
- Probe storage
- Magnetic hanger and tilt stand

#### Included

- Deluxe silicone test leads – ADLS2
- Short alligator lead extensions – ASA2
- 400A amp clamp accessory – ACH4
- Type K thermocouple – ATB1
- Nylon case – ANC5



## Dual Alligator Clips

### ADA2

- Red and black vinyl insulated cables with small alligator clips on the ends. Each shorting cable is 3.5 feet long



## Current Clamp Head

### ACH4

- Measures AC Amps from 1A to 400A
- Accuracy:
  - 1A-20A AC:  $\pm(1.5\% \text{ rdg} + 0.2\text{A})$
  - 20A-100A AC:  $\pm(2.5\% \text{ rdg} + 0.3\text{A})$
  - 100A-400A AC:  $\pm(3.5\% \text{ rdg} + 0.5\text{A})$
- .91" (23mm) maximum conductor diameter



## Electronic Handle for Accessory Heads

### EHDL1

Converts any Fieldpiece Accessory Head into a standalone instrument.

- MIN/MAX button
- Use with any Fieldpiece accessory head
- Hold button



## Silicone Test Leads

### ASLS2

- High copper strands, silicone insulated test leads
- Basket style strain relief



## Deluxe Silicone Test Leads

### ADLS2

- Same as the ASLS2 with the addition of removable probe tips for connection to accessory heads



## Deluxe Test Lead Kit

### ADK7

- Silicone test leads, removable probe tips and alligator clips for grounding
- Includes moxex tips



***Temperature/RH%***



## Dual Temperature Thermometer

ST4

### Heavy Duty Dual Temp

The ST4 measures two temperatures simultaneously. The ST4 provides superior temperature compensation in rapidly changing environments.

- Delta T
- 0.1°F resolution
- Easy field calibration
- Reads T1, T2, or T1-T2
- °F or °C
- Superior temperature compensation

### Included

- Case with hanger
- 2 Type K thermocouples – ATB1
- 2 Velcro straps



## Dual In-duct Psychrometer

SDP2

### Do More with One Tool

Measure both sides of the evaporator in real-time.

- Measure supply wet bulb and temp and return wet bulb and temp all at ONE TIME
- Calculates temp split and TEET
- Monitors enthalpy (BTU) change across evaporator
- Sends values wirelessly to system analyzers
- Works with Job Link® System



## Diagnostic Psychrometer

SRH3

### Easier Target Superheat

The SRH3 is a great tool to properly charge fixed restrictor systems by quickly determining the target superheat and target evaporator exit temperature.

- Measures temps and %RH
- Calculates wet bulb and dew point
- Quickly provides target superheat for charging
- Helps determine proper air flow with target evaporator exit temperature

### Included

- Stabilizing cone - RCONE1
- Padded blow-molded Case



## Psychrometer Accessory Head

### ARH5

The ARH5 measures and calculates from inside the duct for more measurements.

- Measures temps and %RH
- Calculates wet bulb dew point
- Fast, accurate results target superheat and evaporator exit temperature

### Included

- Stabilizing cone - RCONE1



## Gun Style IR Thermometer with Laser

### SIG1

The SIG1 takes accurate surface temperatures. The narrow 10:1 field of view allows techs to target smaller areas.

- 10:1 field of view
- Select °F or °C
- Range: -22°F to 1022°F

## IR Thermometer with Laser

### SIR2

Ergonomic pocket IR with laser.

- 6:1 field of view
- MIN/MAX automatic data hold
- Select °F or °C



## Dual Temperature Accessory Head

### ATH4

Measures two temperatures simultaneously to output T1, T2, or T1-T2

- ±1°F accuracy
- Select °F or °C
- Range: -50°F to 1800°F
- Superior temp compensation

## Rod and IR Temperatures SPK3

### Convenient 2-Way Temp.

Easy to use compact tool for quick in-duct, register, and ambient temperatures.

- 8:1 IR
- Hands free in-duct temps
- Quick T1-T2 calculations
- Max/min/hold





## IR Pocket Thermometer with LED Flashlight

SIL2

Great accuracy and a built-in LED flashlight.

- 1:1 field of view
- Automatic data hold
- Select °F or °C



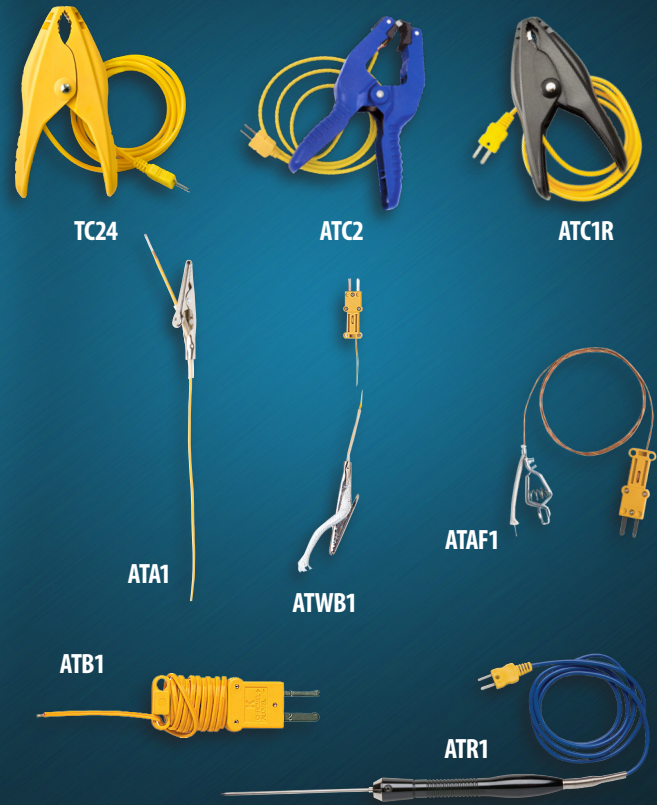
## Digital Pocket Psychrometer

PRH2

Everyday measurements at your fingertips.

- Wet bulb, dry bulb, dew point, %RH
- Quick walk-around measurements
- Easy in duct readings
- Helps calculate target superheat

## All Fieldpiece thermocouples work with Fieldpiece meters that take temperature.



Model	Description	MAX° F PROBE TEMP
ATBI	Bead type standard	400
ATAI	Bead type with alligator	400
ATAFI	HI-temp bead type with alligator	900
ATWBI	Wet bulb (sock) with alligator	200
ATCIR	Pipe clamp-refrig. (1/8-to 3/4")	257
TC24	Fast Reacting Pipe clamp-Temp. (3/8-to 1 3/8")	257
ATC2	Pipe clamp (up to 2 1/4")	180
ATEXT10	10' extension cables	400
ATRI	4.5- piercing rod with handle	1500



# Refrigerant Leak Detection



## Infrared Refrigerant Leak Detector

SRL2K7

### Superior Sensitivity in Refrigerant Leak Detection

This infrared leak detector helps you find leaks with pinpoint accuracy. It automatically adjusts to high ambient refrigerant levels, and by using the required sweeping technique, techs can quickly and easily uncover the exact location of the leak.

- Equal sensitivity to all refrigerants
- Pinpoint accuracy
- Sensor sensitivity doesn't weaken over time
- Rechargeable eight hour lithium ion battery
- Turbo mode to pick up very low level leaks

### Included

- 5 O-rings and 10 replacement filters – RFL2
- 9" Flex extension probe – RFE2
- 9" Rigid extension probe – RRE2
- Wall charger – RWA2
- Car charger – RCA2
- Blow-molded Case

## Heated Diode Refrigerant Leak Detector

SRL8

### The Traditional Heated Diode Detector

The SRL8 is a rugged and accurate leak detector that senses all CFCs, HFCs, HCFCs, and blends.

- Sensitivity below 0.1 oz/yr
- 15-hour rechargeable lithium battery
- Manual or automatic zeroing
- Magnetic hanger
- Three sensitivity levels

### Included

- 5 O-rings and 10 replacement filters – RFL2
- 9" Flex extension probe – RFE2
- 9" Rigid extension probe – RRE2
- Wall charger – RWA2
- Car charger – RCA2
- Blow-molded case

## Carbon Dioxide Leak Detector

SCL2

### Quickly Close in on CO2 Leaks

Find leaks on commercial refrigeration systems, restaurant soda machines, or any other system using R-744. Pinpoint tiny leaks in high concentration CO2 environments with ease.

- Find R-744 refrigerant leaks
- Long-life sensor made to last up to ten years
- Three sensitivity levels down to 6g (0.2oz) per year
- Senses change. Works in contaminated environments
- Rechargeable lithium ion battery with two chargers

### Included

- 10 Moisture filters
- 5 O-rings
- 9" Flex extension probe – RFE2
- 9" Rigid extension probe – RRE2
- Wall charger – RWA2
- Car charger – RCA2
- Blow-molded case



***Airflow***



## CFM Without a Hood

### STA2

The STA2 In Duct Hot-wire Anemometer calculates CFM from air velocity and free area.

With in-duct traversing the STA2 is an excellent alternative to costly, bulky hoods for air balancing.

- Fast response time
- Dual display to show any combination of real-time CFM, air velocity, or temp
- Minimizes effects of turbulence with time or test point averages
- Fast, accurate temps
- Affordable air balancing

### Included

- Stabilizing cone - RCONE1
- Padded blow-molded case



## Air Velocity and Temperature Accessory Head

### AAV3

- Air Velocity:
  - Ft/min, meters/sec, MPH, KM/hr
  - Range: 80 to 5900 ft/min
  - Accuracy:  $\pm 3\% + 1 \text{dgt}$
- Temperature:
  - Displays  $^{\circ}\text{F}$  and  $^{\circ}\text{C}$
  - Range:  $-4^{\circ}\text{F}$  to  $140^{\circ}\text{F}$
  - Accuracy:  $\pm 1^{\circ}\text{F}$  from  $32^{\circ}\text{F}$  to  $113^{\circ}\text{F}$
  - Resolution:  $0.5^{\circ}\text{F}$



## Dual Port Manometer

### SDMN5

Gas Pressure, Static Pressure AND Differential Pressure.

Rugged standalone dual-port manometer that measures differential, absolute, and static pressure.

- Measures Inches WC, mm WC, mBar, and PSI
- Magnetic hanger
- Data HOLD
- Measures P1, P2, or P1-P2
- Easy to zero
- Battery check function

### Included

- Two adapters – RMA316
- Two 3/16" tubes with brass fittings

### Optional

- Static pressure probes - ASP2



## Dual-Port Manometer Accessory Head

### ADMN2

Dual-port manometer that measures differential, absolute, and static pressure in mBar or inches of water column (inWC).

- Range from -60 to +60.0 inches WC
- Accuracy  $\pm .02$ WC,  $\pm (0.00$ in WC to 2.00in WC)
- Resolution down to 0.01 in WC for static pressure

### Included

- Adapters – RMA316



## Pressure Manometer Accessory Head

### AMN2

Measures gas pressure with resolution low enough for static pressure.

- Maximum  $\pm 60$  inches WC for gas pressure
- Accuracy:  $\pm 2\%$  FS
- 0.01 inches WC resolution for static pressure
- Manual zero-set for comparing pressures
- Auto power off

### Included

- Adapters – RMA316

### Optional

- Static pressure probes – ASP2



## Dual Port Manometer

### SDMN6

(See page 59-60)



# *Combustion*





## Dual Port Manometer and Pressure Switch Tester

SDMN6

### Do More with the Pressures You Need

Correct pressure switch operation is integral to the safety of a furnace environment. The SDM6 is a dual-port manometer that also accurately tests pressure switches by simulating a draft with an internal pump.

The SDM6 allows you to test pressure switches the right way. Adjust the pump's speed to create a negative pressure (vacuum). The red LED indicates when the switch closes. View the closing and opening pressures directly on the LCD.

The dual-port manometer measures  $\pm 60$  inches of water column, high enough for gas manifold pressures.

Check building pressurization with static pressure resolution of 0.01"WC. View P1-P2 in the bottom line of the display for checking the performance of a blower.



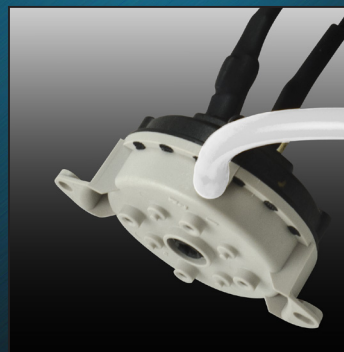
### Check the Pressure Differential Across a Blower

Use the included static pressure probes for easy, accurate, static pressure testing.



### Find Inlet and Outlet Gas Pressures

Screw the brass fittings directly into the gas regulator taps.



### Test any Pressure Switch

Easily calibrate any adjustable pressure switch.

- Gas pressure
- Static pressure
- Pressure differential
- Test pressure switches
- Easily calibrate any adjustable pressure switch
- Great for diagnosing furnace performance

### Included

- SDM6 - Dual Port Manometer and Pressure Switch Tester
- ANC1 - Four pocket carrying case
- ASP2s - Static pressure probes
- RMA316 - Pressure tubes
- Quick connect leads
- Hoses and Y-splitter
- Hoses with brass screw fittings





## Carbon Monoxide Detector

SCM4

### Finds CO Sources Fast

The SCM4 has a very fast reaction time. This rugged instrument can help you hunt down sources of the potentially life-threatening poisonous gas.

- Fast enough for walk around testing
- Calibrates to ambient quickly with ZERO button
- Audio and visual alerts
- Magnetic hanger
- Bright, blue backlight on dual display
- Field replaceable sensor

## Carbon Monoxide Accessory Head

ACM4

- Fast enough to locate CO source in walk-around testing
- Three-pin electrochemical sensor for better performance
- Range 0-1000 ppm (2000 ppm with 5 minute max exposure time)
- Accuracy: 0-35 ppm  $\pm 5\%$  reading,  $\pm 2$  ppm after zeroing
- Field replaceable sensor



## Combustion Check with Automatic Pump

SOX3

### Fast and Easy Furnace Tuning

The SOX3 is an affordable alternative to full-function combustion analyzers. It provides the essential readings needed to tune combustion equipment like measuring flue temp and %O<sub>2</sub>, and calculating %CO<sub>2</sub>, %Excess Air, and combustion efficiency.

- Calculates %CO<sub>2</sub>, %EA, and combustion efficiency
- Hands-free testing
  - Automatic pump
  - Magnetic hanger
  - Threaded barrel-lock cone
- Programmable for custom fuel types



### Included

- Barrel and thermocouple – RSOX3
- Barrel-lock cone – RCONE2
- Foam padded hard case

## Oxygen and Carbon Dioxide Accessory Head

### AOX2

The AOX2 measures oxygen in the flue gas for combustion analysis, and also computes %CO<sub>2</sub> and measures stack temperature.

- Measures %O<sub>2</sub>, %CO<sub>2</sub>, or temperature
- LED indicates stable reading



## Dual Port Manometer Accessory Head

### ADMN2

The ADMN2 measures differential, absolute, and static pressure.

- Range from -60 to +60.0 inches WC
- Accuracy of  $\pm 1.5\%$  FS

#### Included

- Two adapters – RMA316



## Manometer Accessory Head

### AMN2

Measures gas pressure and has resolution low enough for static pressure.

- Maximum  $\pm 60$  inches
- WC (water column) for gas pressure
- Accuracy:  $\pm 2\%$  FS
- Manual zero-set for comparing two pressures



## Dual Port Manometer

### SDMN5

Rugged standalone dual-port manometer that measures differential, absolute, and static pressure.

- Measures inches WC, mmWC, mBar, and PSI
- Measures P1, P2, or P1-P2
- Easy to zero

#### Included

- Two adapters – RMA316
- Two 3/16" tubes with brass fittings



***Pocket Tools***





### ***In Duct Psychrometer*** PRH2

- Wet bulb, dry bulb, dew point, %RH
- Quick walk-around measurements
- Easy in duct readings
- Helps calculate target superheat

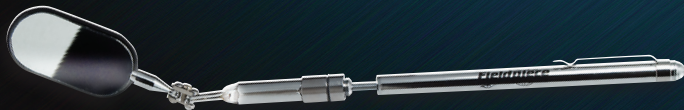
### ***Magnetic Parts Dish*** MDSH1

Never lose a bolt or screw again.



### ***Lighted Magnet Tool*** PMG2

Perfect for picking up dropped screws, keys, even tools. LED shines through "donut-hole" magnet to direct light where you need it most.



### ***Lighted Mirror Tool*** PLM2

Mirror adjusts in any direction and makes viewing in tight places possible. LED reflects light from the mirror to shine where you need it. Detach the mirror to use as flashlight.



## Gun Style IR Thermometer with Laser

### SIG1

The SIG1 makes taking surface temperatures easy, accurate and fast. The narrow 10:1 field of view allows you to target smaller areas from further away. The backlight allows you to read the measurements in any light.

- 10:1 field of view
- Select °F or °C
- Range: -22°F to 1022°F
- Accuracy:  $\pm 4^\circ\text{F}$  or 2% rdg, whichever is greater
- Resolution: 1°F
- Automatic data hold
- Backlight
- Auto Power Off (APO) to conserve battery life



## Pocket Knife Style Stainless Steel Thermometer

### SPK1

- Detent holds rod in 16 positions
- Easily hangs from thermostat, register, or a hole in flex duct
- Range: -58°F to 392°F
- MIN/MAX and Hold



## In-duct Thermometer

### SPK2

- Quick and easy in-duct measurements
- Hanging hook for hands free temps
- Fits easily in pocket
- Bright backlight
- Range: -58°F to 392°F



## Water Resistant Stainless Steel Thermometer

### SWT2

- MIN/MAX
- Accuracy:  $\pm 1.8^\circ\text{F}$ , -4°F to 392°F
- Resolution 0.1°F
- Range: -58°F to 392°F



SWT2 with cap off

## Non-Contact Voltage Tester

### SNCV1

- Detects live AC voltage without contact
- Bright LED and loud beeper
- Range: 24VAC to 440VAC
- Senses 24VAC for thermostat power
- Analog feel indicates strong and weak AC voltage fields



## Megohmmeter

### SMG5

- Helps predict compressor failure
- Great for preventative maintenance
- One handed testing
- Long probe tip for hard to reach terminals
- Bright backlight



## IR Pocket Thermometer with LED Flashlight

### SIL2

The SIL2 has great accuracy and a built-in bright LED flashlight that uses a separate AAA battery. The SIL2 looks like a pen in your pocket.

- 1:1 field of view
- Automatic data hold
- Select °F or °C
- Range: -27°F to 230°F
- Excellent accuracy:  $\pm 1.5^\circ\text{F}$
- Resolution: 0.5°F
- Auto power off



## Thermometer with Laser

### SIR2

- 6:1 field of view
- MIN/MAX automatic data hold
- Select °F or °C
- Range: -27°F to 482°F
- Accuracy:  $\pm 4^\circ\text{F}$  or 2% rdg, whichever is greater
- Resolution: 0.1°F
- Auto power off
- One-hand operation



# ***Bags***





## Inspection Tool Bag

BG36

The BG36 Inspection Tool Bag is an easy to carry, over the shoulder bag with an easy to open pop top. The pop top protects your tools from inclement weather, and from spilling out if dropped or knocked over. Plus it provides extra space for small tools and drill bits. While the strong magnetic tray holds cabinet screws and washers so they're never lost.

Sectioned interior pockets keep everything organized. Zippered side pocket and large interior adjustable section protect meters from hand tools. Large open front pocket and expandable side pocket allow for additional storage. Sturdy weather protected base keeps bag standing upright.

The BG36 is extremely durable with reinforced construction, ballistic grade nylon, and ripstop nylon. Plus it's comfortable to wear with a padded, breathable back panel and adjustable strap.

- Easy access pop top
- Quick locking magnetic closure
- Isolated pockets for test instruments
- Compact rugged design
- Magnetic tray
- Weather protected sturdy base



## Service Tool Backpack

BG44

The BG44 Single Strap Bag System is specifically designed to fit the needs of the HVACR professional. A smaller and easier bag crafted for the initial call to test and assess a system.

Padded outside pockets keep instruments protected and away from hand tools. A strong and sturdy base keeps the bag upright and not directly on the ground.

The interior tool rack organizes hand tools for easy access and quick visibility so missing tools don't get left behind. Special accessories include a magnetic tray, water bottle/ wasp spray strap, electrical tape strap, small plastic tray storage in bottom, and drill holster. All in a compact bag that fits snugly to the body to fit in tight places like crawl spaces and ladder cages.

- Compact for tight crawl spaces and ladder cages
- Water resistant
- Elevated sturdy base
- Magnetic strip to keep screws in one place
- Padded outside pockets to protect meters
- Store small tablet in the padded slip pocket
- Plenty of D rings to connect accessories
- Tool organizer for hand tools

Product		Pages
AAV3	Air Velocity and Temperature	54
ACH4	Current Clamp	38
ACM4	Carbon Monoxide Accessory Head	61
ADA2	Dual Alligator Clips	37
ADK7	Deluxe Test Lead Kit	38
ADLS2	Deluxe Silicone Test Leads	38
ADMN2	Dual-Port Manometer	56
AMN2	Pressure Manometer	56
AOX2	Oxygen and Carbon Dioxide	63
ARH5	In Duct Digital Psychrometer	43
ASLS2	Silicone Test Leads	38
ASX14	Superheat and Subcooling	26
ATH4	Dual Temperature	43
AVG2	Digital Vacuum Micron Gauge	26
BG36	Inspection Tool Bag	73
BG44	Service Tool Bag	74
EHDL1	Electronic Handle for Accessory Heads	38
HS33	Stick Meter	35
HS35	Stick Meter	35
HS36	Stick Meter	35
JL3 Probes	Job Link® System Probes	16
LT17A	Digital Multimeter	37
MDSH1	Magnetic Parts Dish	67
MR45	Recovery Machine	21
PLM2	Lighted Mirror Tool	67
PMG2	Lighted Magnet Tool	67
PRH2	Digital Pocket Thermometer	45
S365	Charging Jacket	26
SC220	Compact Clamp Meter	33
SC240	Compact Clamp Meter	33
SC260	Compact Clamp Meter	33
SC420	Essential Clamp Meter	31
SC440	Essential Clamp Meter	31
SC460	Essential Clamp Meter	31
SC620	Loaded Clamp Meter	29
SC640	Loaded Clamp Meter	29
SC660	Loaded Clamp Meter	29
SCL2	Carbon Dioxide Leak Detector	50
SCM4	Carbon Monoxide Detector	61
SDMN5	Dual Port Manometer	55
SDMN6	Dual Port Manometer and Pressure Switch Tester	59
SDP2	Dual In-Duct Psychrometer	42
SIG1	Gun Style IR Thermometer with Laser	44
SIL2	IR Pocket Thermometer with LED Flashlight	45

Product		Pages
SIR2	Thermometer with Laser	70
SM380V	3 Port Digital Manifold	11
SM480V	4 Port Digital Manifold	11
SMG5	Megohmmeter	70
SNCV1	Non-contact Voltage Tester	70
SOX3	Combustion Check with Automatic Pump	62
SPK1	Compact In-Duct Thermometer	69
SPK2	In-Duct Thermometer	69
SPK3	Rod and IR Temperatures	44
SRH3	Diagnostic Psychrometer	41
SRL2K7	Infrared Refrigerant Leak Detector	49
SRL8	Heated Diode Refrigerant Leak Detector	50
SRS1	Wired Refrigerant Scale	23
SRS3	Wireless Refrigerant Scale	24
SSX34	Superheat and Subcooling	25
ST4	Dual Temperature Thermometer	41
STA2	In Duct Hot-wire Anemometer	53
SVG3	Digital Micron Vacuum Gauge	25
SWT2	Water Resistant Stainless Steel Thermometer	69
<b>Thermocouples</b>		46
VP85	8 CFM Vacuum Pump	19
VP55	5 CFM Vacuum Pump	19
VP - Oil	Vacuum Pump Oil	20



Fieldpiece Instruments  
1636 West Collins Ave  
Orange, CA 92867